

# CERTIFICATE OF LOCATION OF GOVERNMENT CORNER

West Quarter Corner of Section 1, Township 107 N., Range 39 W., 5th P.M.

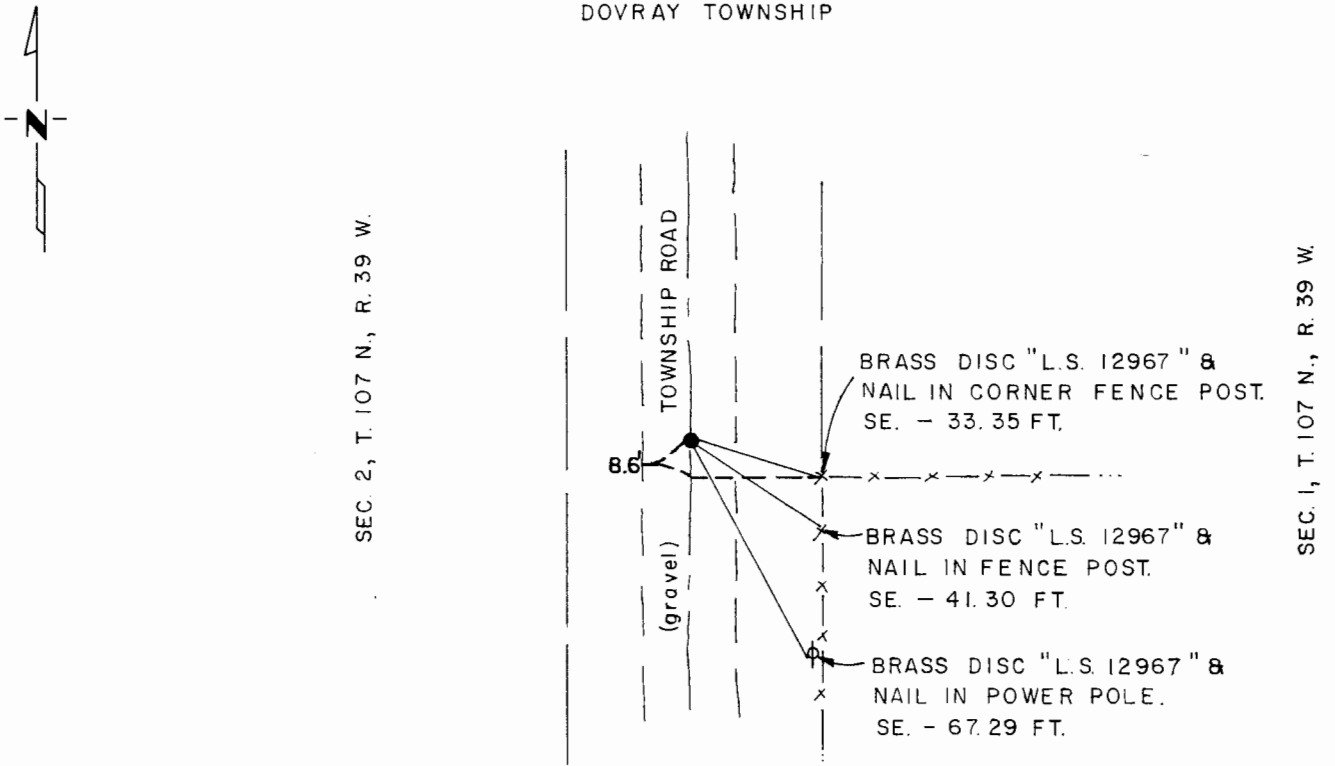
STATE OF MINNESOTA, County of Murray

At the corner location shown on the sketch:

- On Aug. 19, 1980 found a field stone, per Co. records, 8" x 10" x 16" approx. 1.0'  
DATE  
below grade; stone was on the C of the Twsp. Rd. & 8.6' N. of fenceline running east.
  - left monument as found,  lowered monument,  removed monument (explain)
  
- On Aug. 19, 1980 placed a 1/2" iron reinforcing bar with "L.S. 12967" cap over the  
DATE  
field stone.

### SKETCH OF REFERENCE TIES

DOVRAY TOWNSHIP



I hereby certify that this document and the data contained herein was prepared by me or under my direct supervision.

*Way D. Mat...*  
SIGNATURE

12/28/81  
DATE

Registration No. 12967

- Land Surveyor,  Professional Engineer
- County Surveyor,  County Engineer

### OFFICE OF THE COUNTY RECORDER

County of Murray

I hereby certify that this document was filed in the Co. Recorders office at 10 A.M. on the 18th day of February A.D., 1982

County Recorder *Willard W. Ohme*

By \_\_\_\_\_, Deputy

DOCUMENT NO. \_\_\_\_\_